

Requirements Traceability

CQC Solutions has now incorporated Traceability into CA-Clarity

(supporting Safety Instrumented Systems)

For companies developing new products and or new software, it is paramount that every specified requirement is met.

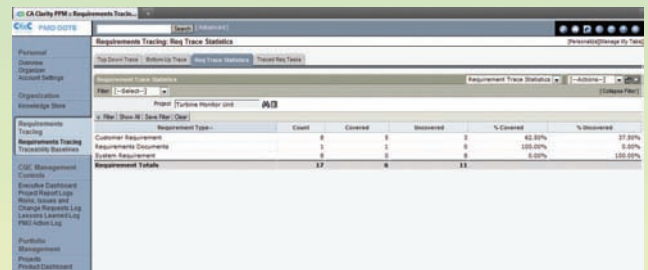
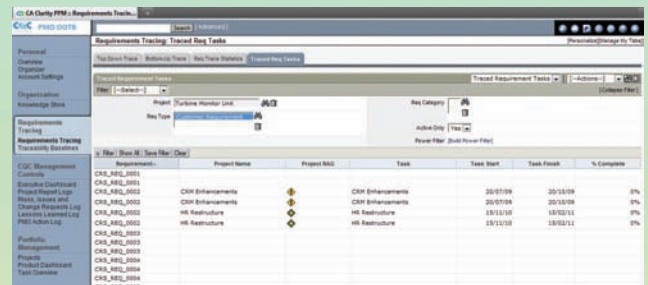
For some industries this is also a critical safety issue, and Requirements Tracing becomes part of a larger certification process whereby a full audit trail of how requirements have been implemented and tested is mandatory. This is often covered by the generic standard IEC61508 for the design, construction and operation of electrical/electronic programmable systems. However many industries have their own derivations, for example:-

- DO178B & DO254 Avionics software and hardware standards.
- ISO 26262 Automotive standards, (currently draft).
- IEC 61513 Nuclear Industry for instrumentation and control for systems important to safety.
- CMMI Level 2 Capability maturity model standard.
- EN5012x/IEC 62425 for railway signalling systems.
- FDA 21 CFR for laboratory practices for conducting non-clinical laboratory studies.



CQC Solutions has developed a Requirements Tracing capability using the world leading CA Clarity PPM system which will not only meet the overall tracing need but provides the following added advantages :-

- Full linkage to Programmes, Projects and Portfolios.
- Full Resource Management capability linked to the Projects/Programmes and Portfolios.
- Ability to enter via a Web based portal the **Requirements** and link **Contractual Requirements Specification to Specific Design Specifications** through to **Test Plans & Test Results**, in a fully auditable way, obviating the need for a Requirements Traceability Matrix.
- Documentation structure and storage (including diagrams) that can be linked to Specifications, Projects, Programmes and Portfolios.
- Detailed **dashboards and reporting**, including the generation of documents from requirements entered into Clarity PPM.
- **Ideas capture, strategic alignment** and the ability to run **scenarios** at the Portfolio level.
- Accurate real time metrics for projects, programmes and portfolios such as Estimated Time to Complete (ETC), **costs** and **financial plans**.
- Ability to partition instances such that **outsourced** work can be monitored and reported against the overall Programme/Portfolio – without the outsource company having visibility of **commercially sensitive materials**.
- Sophisticated workflows that enable business processes such as NPD Stage-Gate® and/or Prince II methodology including notification by Email or SMS when a user is required to take action.



For further information visit www.cqc-solutions.co.uk