

Gelimex 2.0

CQC Solutions has for many years been at the forefront of contributing to functionality and usability of the PPM tool CA-Clarity and prior to that Niku.

CA-Clarity is the leading tool in the Gartner magic quadrant and is functionally very rich and powerful. To complete the ease of use for data entry, CQC Solutions have now developed an easy to use java application, so you can upload/download data from/into Excel spreadsheets.

This java application is simple to configure and simple to use. From a selection of configured GEL* templates, the user can enter their Clarity login information, select an Excel spreadsheet and the sheet within to upload and import.

The java application then makes use of XOG** to load the data, the output of which is displayed to the user when complete.



Gelimex 2.0

Technical Information

Gelimex is a Java based application that is designed to run custom GEL* scripts for the

- 1) The native import of data from excel spreadsheets into Clarity.
- 2) The export of data from Clarity into template / blank spreadsheets.

Gelimex contains Gel libraries developed by CQC that allow the direct reading and writing of Excel spreadsheets from within the GEL* script, thus eliminating issues with high ascii character sets.

Gelimex is a self contained jar file which just needs java 1.6 runtime.

Gelimex is supplied with template GEL* scripts that can be used, modified and maintained in-house.

Gelimex also allows XOG** to navigate across proxy servers

Export Features

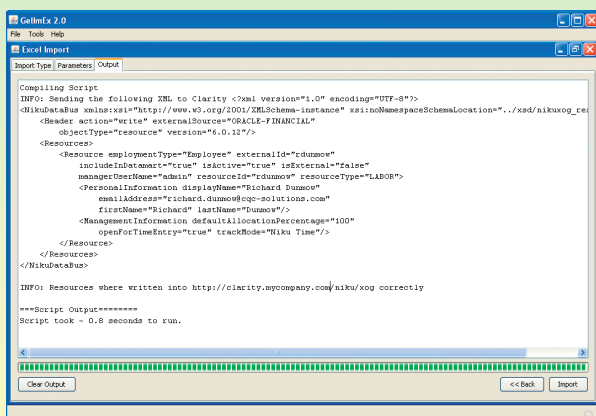
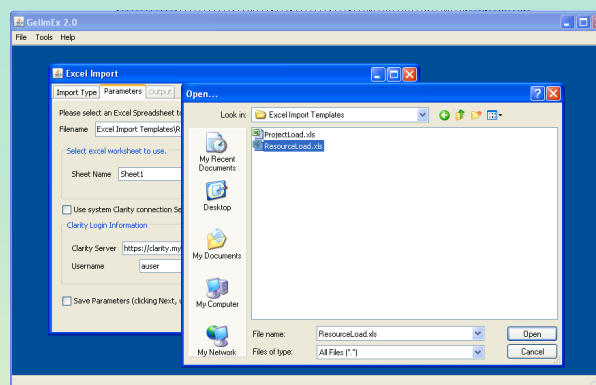
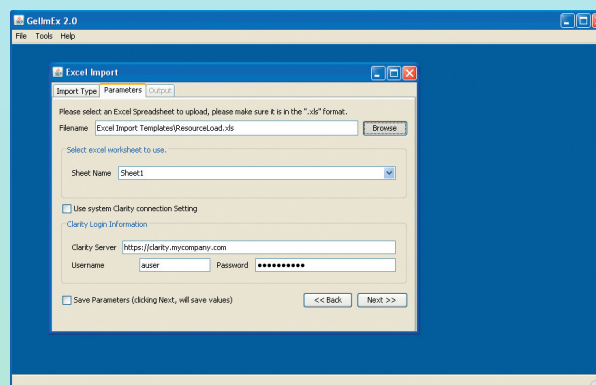
The export feature of Gelimex allows formula's to be embedded into the GEL* scripts, this allows spreadsheets with running totals and other formula based calculations to be done within Excel itself.

Template spreadsheets can also be used that can contain graphs etc, but just need data loading into them.

Emails with Attachments

Gelimex also contains extra enhancements that allow HTML emails with attachments to be generated, so Gelimex can export data from Clarity and distribute that information within your organization.

* GEL - Generic Execution Language
* XOG - XML Open Gateway



For further information visit
www.cqc-solutions.co.uk