

# INSTANTIS ENTERPRISETRACK FOR IT PROJECT PORTFOLIO MANAGEMENT AND PROJECT MANAGEMENT OFFICES

## KEY BENEFITS

- Plan and execute project portfolio strategies centrally.
- Manage demand and resource utilization across IT and other project portfolio types.
- Monitor, report, and analyze work and project portfolio activity, status, and metrics.

## KEY FEATURES

- Flexible dashboard and reporting solutions
- Collaboration and social networking capabilities
- Business and IT strategy-driven PPM
- Innovative and visionary user interface
- Secure, scalable, and highly configurable
- Fully internationalized
- On-premises and cloud deployment options

*Oracle's Instantis EnterpriseTrack is the leading, cloud-optimized enterprise project portfolio management (PPM) software used by IT and project management offices (PMOs) to improve strategy execution and financial performance through better work and resource management. It provides an end-to-end solution for managing, tracking, and reporting on enterprise strategies, processes, projects, programs, portfolios, products, resources, costs, and benefits. Unlike competitive alternatives, Instantis EnterpriseTrack is easy to deploy quickly, easy to use and administer, and easy to afford.*

## Advantages for IT and Project Management Offices

Instantis EnterpriseTrack is easy.

- *Easy* to deploy quickly on premises or in the cloud. You can be up and running in days, not months.
- *Easy* to use and administer.
- *Easy* to afford. The total cost of ownership is much lower compared to traditional services-intensive systems because rich functionality is available via out-of-the-box configuration settings, not customization.

Instantis EnterpriseTrack goes beyond IT PPM.

- Multiple initiatives or project portfolio types—such as new product development and business process improvement—can be supported in a single system.
- Standardization and consolidation of PPM governance processes, reporting, and resource and financial management enterprisewide is now possible.

Instantis EnterpriseTrack addresses key CIO drivers.

- Personalizable dashboards and reports put real-time resource and project information at the finger tips of executives and project stakeholders.
- The unique Strategy Manager module in Instantis EnterpriseTrack ensures that projects are aligned with business priorities and IT strategic initiatives. With it, IT has an easy way to manage and integrate additional IT portfolio types such as applications, assets, services, investments, and vendors.

## Dashboards and Reports

The heart of Instantis EnterpriseTrack is its market-leading dashboard and reporting capabilities. They allow easy, secure, instant dashboard and report creation and sharing with full drill-down capability. Dashboards and reports can be configured to securely roll up and report on project resources, progress, costs, and results in and across project portfolio types, making Instantis EnterpriseTrack an ideal solution for supporting IT and enterprise PMOs.

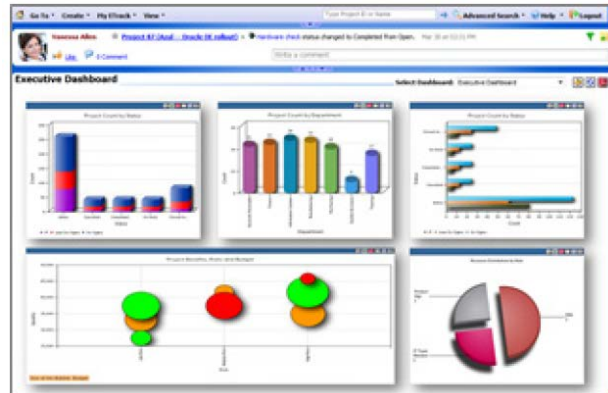


Figure 1. Dashboards aggregate and present key metrics in an intuitive fashion.

### Collaboration and Social Networking

The EnterpriseStream module of Instantis EnterpriseTrack is the first and only purpose-built and seamless collaboration and social networking capability for PPM practitioners and stakeholders across the enterprise. As a result, there is virtually zero effort to set it up, access the tool, start collaborating, and realize immediate productivity results.



Figure 2. Instantis EnterpriseTrack provides a modular solution approach.

### Lifecycle Modules

Instantis EnterpriseTrack supports the following solution modules to help organizations plan and execute project work across a complete PPM lifecycle.

#### Plan

- The **Strategy Manager** module enables organizations to define a hierarchical portfolio of strategic goals and initiatives and drive execution from the top down.
- The **Applications Manager** module allows IT to define and track a portfolio of applications and associated usage, cost, and performance metrics to drive appropriate lifecycle decisions.

#### Select

- The **Idea Manager** module automates your project's "suggestion box" by capturing project ideas and filtering requests leveraging an optional online portal.
- The **Demand Manager** module streamlines and standardizes in-take capture, workflow, prioritization, resource scoping, and approval processing for simple and complex work/service requests, proposals, and business cases.

### Mobilize

- The **Capacity Manager** module facilitates resource [visibility via resource calendars and optimization](#) via “what if” scenario planning to simulate the impact of shifting, excluding, or adjusting effort of proposed project plans.
- The **Resource Manager** module offers resource pool visibility and allocation control by balancing in-bound work demands with available resources such as time, people, or budget.

### Execute

- The **Project Manager** module ensures best-practice application of chosen methodologies. It increases project visibility—including status, issues, and risks—and guides project team execution in achieving goals leveraging a flexible *n*-level–deep work breakdown structure.
- The **Knowledge Manager** module streamlines project execution and enhances work management practices by leveraging a centralized knowledgebase of project best practices, documents, tools, and templates.

### Measure

- The **Financials Manager** module tracks plan versus actual costs; top-down and bottom-up project budgeting; and capitalization, expense, and chargeback accounting.
- The **Metrics Manager** module tracks and rolls up nonfinancial performance indicators such as defects, service levels, trouble tickets, or any other user-defined operational metric.

### Instantis EnterpriseTrack Technology and Cloud Service

Instantis EnterpriseTrack is a secure, 100 percent Web-based application that can be deployed on the customer premises or in the cloud via Oracle’s Instantis EnterpriseTrack Cloud Service. Because identical application code is used in both scenarios, customers can easily start on premises and switch to the cloud or start in the cloud and bring the solution in-house as business needs dictate. As such, unique configuration settings are preserved; only data and documents need to be migrated. The system is well known for its unmatched out-of-the-box configurability, and deployment timeframes can be measured in days, not months. Instantis EnterpriseTrack Cloud Service has a 10-year track record of mission-critical service levels in terms of security, performance, availability, and reliability. Whether you deploy on your own premises or in the cloud, Instantis EnterpriseTrack enables you to complete more, higher-value projects on time and on budget with existing resources. As a result, organizations quickly accrue financial benefits and typically realize a compelling ROI in less than one year.

### Contact Us

For more information about Oracle’s Instantis EnterpriseTrack and Instantis EnterpriseTrack Cloud Service, visit [oracle.com](http://oracle.com) or call +1.800.ORACLE1 to speak to an Oracle representative.



Oracle is committed to developing practices and products that help protect the environment

Copyright © 2013, Oracle and/or its affiliates. All rights reserved.

This document is provided for information purposes only, and the contents hereof are subject to change without notice. This document is not warranted to be error-free, nor subject to any other warranties or conditions, whether expressed orally or implied in law, including implied warranties and conditions of merchantability or fitness for a particular purpose. We specifically disclaim any liability with respect to this document, and no contractual obligations are formed either directly or indirectly by this document. This document may not be reproduced or transmitted in any form or by any means, electronic or mechanical, for any purpose, without our prior written permission.

Oracle and Java are registered trademarks of Oracle and/or its affiliates. Other names may be trademarks of their respective owners.

Intel and Intel Xeon are trademarks or registered trademarks of Intel Corporation. All SPARC trademarks are used under license and are trademarks or registered trademarks of SPARC International, Inc. AMD, Opteron, the AMD logo, and the AMD Opteron logo are trademarks or registered trademarks of Advanced Micro Devices. UNIX is a registered trademark of The Open Group. 0213

**Hardware and Software, Engineered to Work Together**