

INSTANTIS ENTERPRISETRACK: RESOURCE MANAGER AND CAPACITY MANAGER MODULES

MAXIMIZE YOUR RETURN ON PEOPLE

KEY BENEFITS

- Enterprisewide resource demand, availability, and utilization visibility
- Optimized resource deployment based on business drivers and constraints
- Automated and streamlined resource management, process execution, and reporting
- Ability to anticipate capacity required to execute strategic plan
- Process maturity-appropriate tool configuration

KEY FEATURES

- Leading-edge dashboards and reports
- Innovative user interface and personalization experience
- Unique strategy alignment capability
- "What if" scenario and capacity planning
- Resource calendars for finer-grained capacity planning and project scheduling
- Simple and advanced resource search options
- Robust work breakdown structure (WBS), financial, and timesheet information integration
- Configurable workflow, approvals, and notifications
- Two-way Microsoft Project integration

Resource Manager and Capacity Manager are integrated, core modules of Oracle's Instantis EnterpriseTrack solution for cloud project portfolio management (PPM). The modules empower IT resource and portfolio managers with the ability to (1) gain top-down visibility into resource commitments and investments across the enterprise; (2) automate the resource scenario planning, assignment, approval, and reporting process; (3) optimize resource utilization and productivity based on demand volume, business priorities, cost, and risk; and (4) ensure that the right amount of technology is deployed to achieve your resource management goals relative to your level of PPM process maturity.

Key Solution Module Advantages

Instantis EnterpriseTrack provides project managers with the following advantages:

- **Interactive dashboards and reports.** A leading IT PPM industry analyst described the reporting capabilities as "visionary" and "unprecedented." Users can compose personalized dashboards easily by dragging and dropping relevant, drillable graphical components from a growing gallery of out-of-the-box resource capacity and utilization charts. In addition, color-coded heat-map reports provide a single version of truth for resource commitments and anticipated utilization by individuals and roles.
- **Unparalleled usability.** Instantis EnterpriseTrack provides revolutionary page view personalization and allows users to dynamically configure resource listing pages to suit personal preferences. Its capabilities include unique column selection and drag-and-drop ordering, in-page filtering, group-by functionality, pivot, and WYSIWYG export to Excel. Finally, the type-ahead resource search function enables easy search and selection.
- **Integrated multi-initiative and strategy alignment capabilities.** Instantis EnterpriseTrack was designed to manage IT, new product development, process improvement, and other portfolio types in a single system. As a result, the system is uniquely suited for managing and reporting on enterprisewide resource utilization and investments. The integrated Strategy Manager module of Instantis EnterpriseTrack allows organizations to define a strategy hierarchy and align projects and resources to the company business objectives.

Sample Screen Shots

The following screen shots highlight key resource and capacity management capabilities including resource availability/utilization heat maps, what-if scenario planning, and graphical resource utilization reporting.



Figure 1. Gain instant visibility to availability by resource or role with heat map reports.

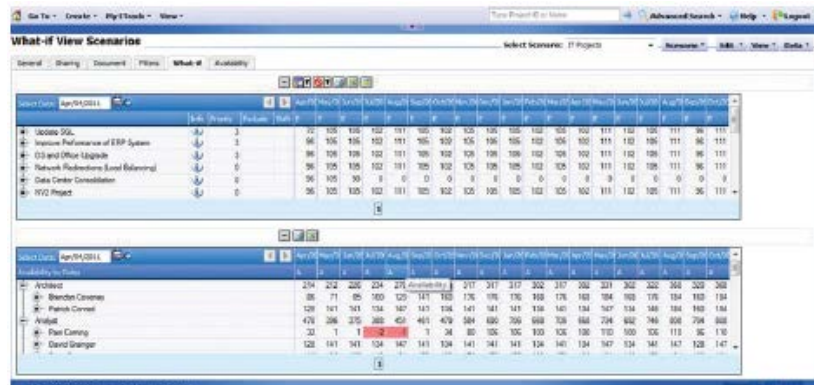


Figure 2. Meet capacity constraints and resource demands with "what if" scenario planning.

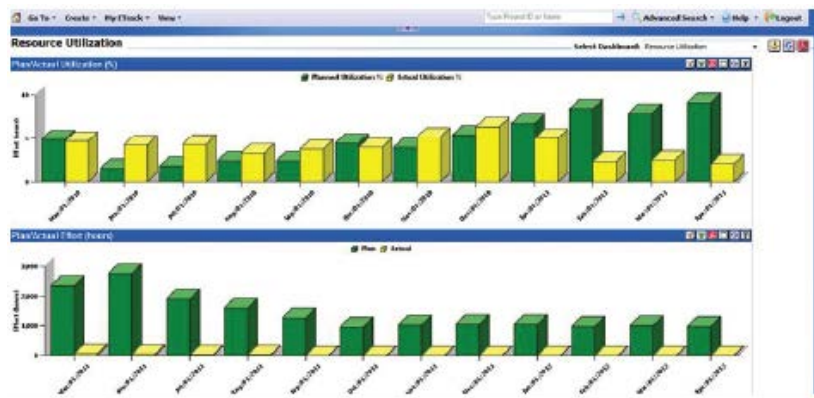


Figure 3. Report on resource utilization, strategy alignment, and other key metrics.

Key Resource and Capacity Management Solution Capabilities

Resource Manager and Capacity Manager are at the heart of Instantis EnterpriseTrack, a modular solution for end-to-end project and portfolio lifecycle management. Collectively, Instantis EnterpriseTrack solution modules allow IT resource and portfolio managers to answer the 12 most critical resource management questions, as outlined in the table below.

Modules and Features of Instantis EnterpriseTrack That Provide Answers to 12 Critical Resource Management Questions	
Key Question	Module or Feature
What does my resource request (demand pipeline) look like right now?	<ul style="list-style-type: none"> Demand Manager module
What are my highest-priority proposals and projects?	<ul style="list-style-type: none"> Prioritization and scoring functionality in Demand Manager module
Will current and future capacity be enough to meet our strategic goals?	<ul style="list-style-type: none"> Integrated Strategy Manager module combined with dashboard and reporting features
What are my resources committed to now and over my planning horizon?	<ul style="list-style-type: none"> Listing pages and heat-map reports in Resource Manager module
What impact would shifting, excluding, or adjusting effort of proposed projects have on my plan?	<ul style="list-style-type: none"> “What if” scenario planning in Capacity Manager module to ensure resource optimization
How can I quickly find the right available resource to fill this request?	<ul style="list-style-type: none"> Simple type-ahead and advanced search filters in Resource Manager module
How do I account for vacation, working holidays, part-time and seasonal workers, in my capacity planning and project schedules?	<ul style="list-style-type: none"> Resource calendars in Resource Manager module
What are my plan and actual cost of resources by project or timeframe?	<ul style="list-style-type: none"> Integrated and configurable Financials Manager module
How do I ensure timely communication of assignment approvals and project responsibilities?	<ul style="list-style-type: none"> Configurable approval workflow and notifications in Resource Manager module
How do I ensure accurate capture of plan and actual effort?	<ul style="list-style-type: none"> Granular WBS task-level effort and timesheet support in Resource Manager module
How do I improve collaboration and best-practice sharing?	<ul style="list-style-type: none"> Integrated repository in Knowledge Manager module and EnterpriseStream module
How can I easily compose and share executive-level reports?	<ul style="list-style-type: none"> Composable dashboards and reports
How do I continue to leverage Microsoft Project for detailed project scheduling?	<ul style="list-style-type: none"> Microsoft Project Connector

Resource Management Thought Leadership

In addition to providing market-leading resource management technology, Oracle helps ensure the right level of investment in people, process, and technology to achieve resource optimization goals. Oracle's Instantis resource management maturity model is designed to help organizations succeed with their resource management initiatives and avoid failures associated with the misalignment of resource information needs, PPM process maturity, and technology deployment. The model describes five levels of maturity, starting with Basic Visibility, along seven key dimensions: assignment, approvals, roles, cost, capacity, governance, and business value.

Contact Us

For more information about Oracle's Instantis EnterpriseTrack, visit oracle.com or call +1.800.ORACLE1 to speak to an Oracle representative.



Copyright © 2013, Oracle and/or its affiliates. All rights reserved.

This document is provided for information purposes only, and the contents hereof are subject to change without notice. This document is not warranted to be error-free, nor subject to any other warranties or conditions, whether expressed orally or implied in law, including implied warranties and conditions of merchantability or fitness for a particular purpose. We specifically disclaim any liability with respect to this document, and no contractual obligations are formed either directly or indirectly by this document. This document may not be reproduced or transmitted in any form or by any means, electronic or mechanical, for any purpose, without our prior written permission.

Oracle and Java are registered trademarks of Oracle and/or its affiliates. Other names may be trademarks of their respective owners.

Intel and Intel Xeon are trademarks or registered trademarks of Intel Corporation. All SPARC trademarks are used under license and are trademarks or registered trademarks of SPARC International, Inc. AMD, Opteron, the AMD logo, and the AMD Opteron logo are trademarks or registered trademarks of Advanced Micro Devices. UNIX is a registered trademark of The Open Group. 0213

Hardware and Software, Engineered to Work Together